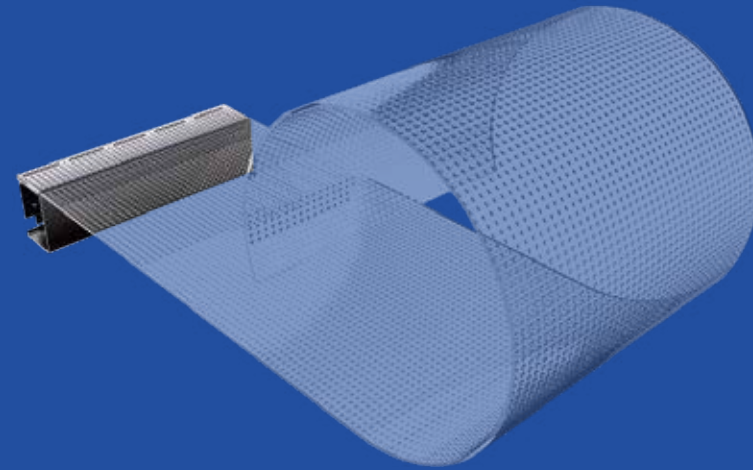
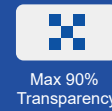


# Creative LED display TF Series

Transparent Film LED Display

Indoor crystal film display screen for high-quality visual experience.

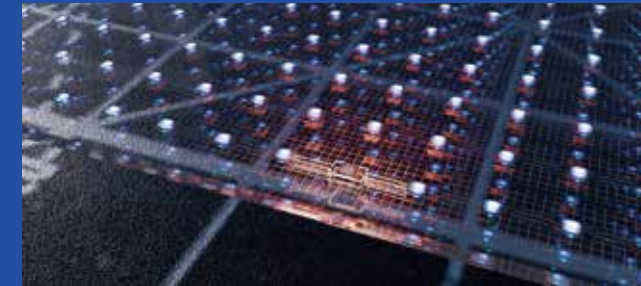


## Parameter »

Model	CHEER-TF6	CHEER-TF8	CHEER-TF10	CHEER-TF15	CHEER-TF20
Module size	816×384mm	1000×400mm	1000×400mm	990×390mm	1000×400mm
LED light	CH1515			CH2121	
Module pixel	136×64=8704 dots	125×50=6250 dots	100×40=6250 dots	66×26=1716 dots	50×20=1000 dots
Pixel/m <sup>2</sup>	27777	16500	10000	6625	2500
Brightness	2000/4000CD/m <sup>2</sup>				
Permeability	90%	92%	94%	94%	95%
Angle of view	160° /160°				
Peak power	400w/m <sup>2</sup>				
Average power	200w/m <sup>2</sup>				
Weight	1.3kg				
Thickness	2.5mm				
Refresh rate	3840Hz				
Grayscale level	16bit				
Typical value of life	100000H				

## Mini LED and Breakpoint continuation

The combination of light and drive, independent research and development, high reliability, industry leading

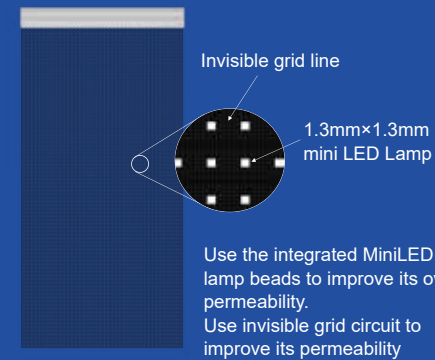


## Easy installation

No steel structure is required, just stick the thin screen slightly and connect the power signal.

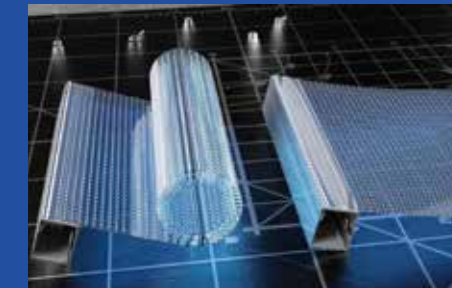


## High Transmittance



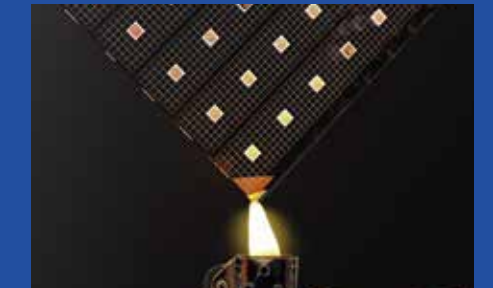
## Flexibility

Applies to any surface  
Fig. 1 Real shot of module curled into a circle  
Surface case



## Flame retardant and UV resistant

Grade V1 flame retardant  
Uv resistance without yellowing >8 years



## Wide Application

